



# INSIDE

## The Clarion University Libraries



November 6, 2012

Volume 8, Number 11

### In This Issue

- Take The LibQUAL+ Survey For A Chance To Win Great Prizes!
- Library Tip: Roving Reference
- Book & Resource Suggestions
- Computer Tip: Your Desktop, Your Way
- Cranial Candy: Rhymes
- Something To Think About

### CU Libraries' Links:

### Inside The Clarion University Libraries

Read back issues of the Libraries' newsletter

The Clarion University Libraries newsletter is published weekly when classes are in session. Through *INSIDE*, we share information about our services and resources with the campus community. *INSIDE* is best viewed with Microsoft Outlook. However, you can read a PDF version of *INSIDE* online through the [Libraries' homepage](#).

## Take The LibQUAL+ Survey For A Chance To Win Great Prizes!



The University Libraries are conducting an online survey that will help the Libraries assess and improve services. Many of our sister schools in the Pennsylvania State System of Higher Education are also conducting the survey

this semester and Clarion University would like to be **#1** in participation.

The link to the survey appears on the [Library](#) Webpage. We encourage all university students, faculty, and staff to complete this important survey. (Survey participants must be 18 or older.) We also ask faculty to announce the availability of this survey during class.

After completing the survey, participants are automatically entered in a drawing to win a prize (university library faculty and library staff are not eligible to win prizes). Prizes to be given away include:

- Google Nexus 7
- \$100 Wal-Mart Gift Card
- \$75 Amazon Gift Card
- \$50 Sheetz Gift Card
- \$25 Barnes & Noble Gift Card.

Tell us what you think and help us to improve services to the University community.

Project #02-12-13

## Library Home

Your link to all of the Libraries' resources

## PILOT

Search the Libraries' online catalog

## Databases A-Z

Search the Libraries' extensive collection of electronic journals and e-books

## Contact Us

Dr. Terry Latour  
Dean of Libraries

## Library Tip: Roving Reference



Need help finding information from the libraries to complete an assignment? Having trouble locating a scholarly journal article? Want some one-on-one instruction on our online library resources?

Look for our *Roving Reference* Librarians in the following locations this semester:

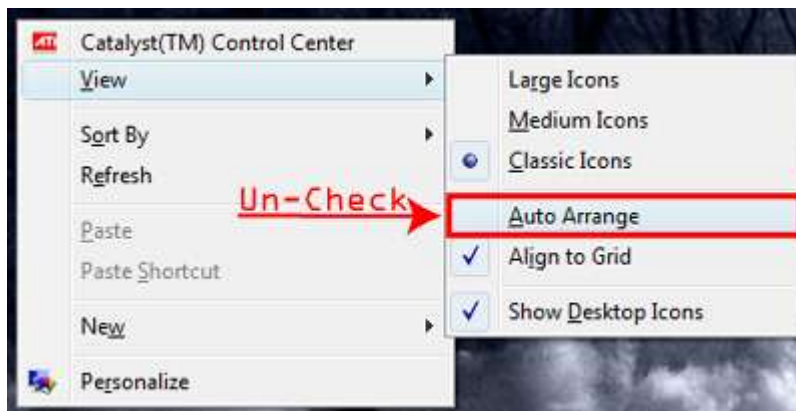
<b>Location</b>	<b>Day</b>	<b>Time</b>
Still Hall Lobby	Thursday	1:30 p.m. - 3:00 p.m.
Gemmell	Wednesday	11:30 a.m. - 12:30 p.m.

We hope to add an evening hour at Reinhard Villages also! As always, you may visit or [contact reference librarians](#) in Carlson and Suhr Libraries during their regularly scheduled reference hours.

## Computer Tip: Your Desktop, Your Way

Do you wish there was a way to make certain that when you drag an icon on your desktop that it stays where you put it? This must be your lucky day, then, because I'm going to show you how to do just that!

- First, Right-Click on your desktop.



- From the fly-out window that appears, put your mouse over "View".
- Un-check "Auto Arrange". (it may say "Auto arrange icons")

Now drag a few icons around and realize the freedom of a completely movable desktop! Now you can bunch icons together into groups, or put them in a location where they can easily be accessed!

## Cranial Candy: Rhymes



Welcome to the web's largest [rhyme](#) search engine! This is where you can find words that [rhyme](#) with a specific word. You'll also find a special collection of nursery rhymes that are featured on the main page.

The site is easy to use, and uses the word "Rhyme" on the front page to illustrate an example of what search results will be. Simply type in a word and click the Search button at the top of the page. The results will look just like the rhyme example on the main page. They even offer you one syllable, and multiple-syllable, rhyme matches.

Another great feature is the ability to find the translation of any word you're looking for by selecting a different language from the "another language" drop down box under translation. Find this drop down beneath the rhyme results for the word you searched.

If you want to look at more nursery rhymes besides those that are featured on the main page, click the double arrows to the right of the title *Our Special Collection of Nursery Rhymes*. This whisks you away to a much larger selection of nursery rhymes to pick from.

While I've often heard that there is no rhyme for the word "orange," the [rhyme](#) website has managed to find a couple!

## Something To Think About:



*I said,  
"Somebody should do  
something about that."  
Then I realized  
I am somebody.  
~Lily Tomlin*