

July Monthly D2L Update Notification

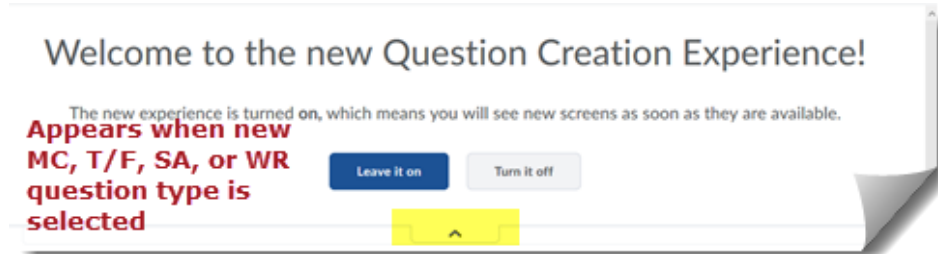
D2L/Brightspace Learning Environment – updated quiz questions experience: Effective July 9

Quiz Question Experience - Update

Instructors will see an "opt-in" option when creating **new** quiz questions for commonly used question types, including: **MC** - Multiple Choice, **T/F** - True/False, **SA** - Short Answer, and **WR** - Written Response. The new experience streamlines the quiz question creation process by simplifying the question interface and user experience.

Instructors may "turn-off" or "opt-out" of the New Quiz Question Experience at any time.

Example "Opt-In" option:



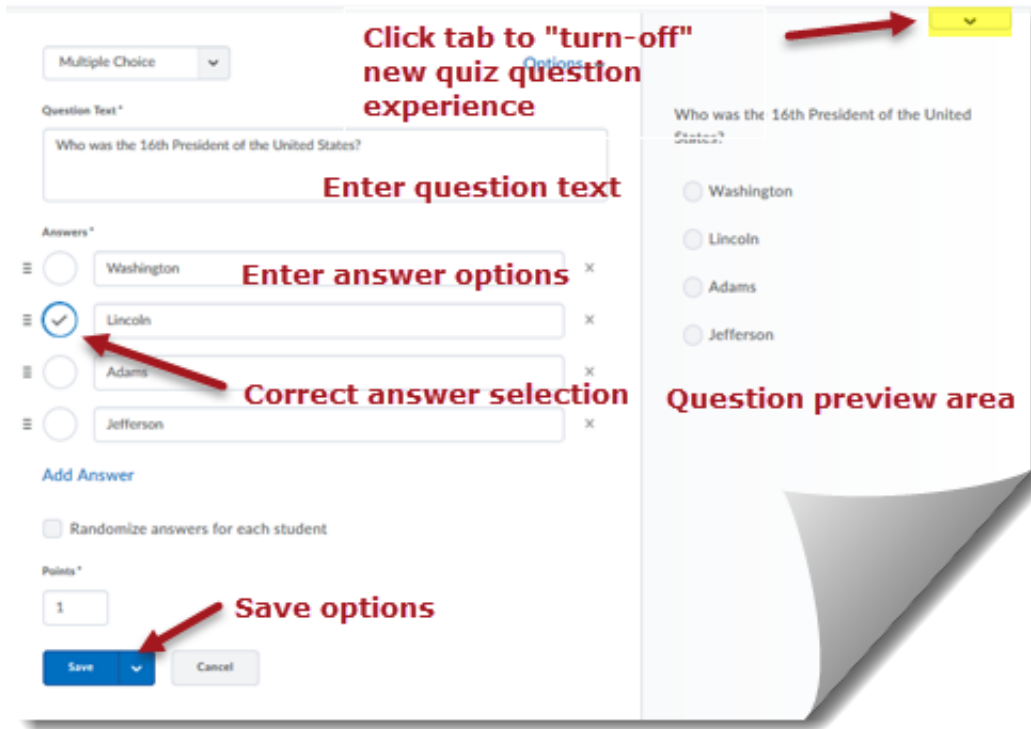
True/False

1. Select your enumeration preference. That is, what (if anything) do you want to appear before the answer choices (a, b, c or I, ii, iii, etc.).
2. Set the **Style** for the choices – vertical, horizontal, or drop-down.
3. Set the **correct answer**. Enter optional feedback for each answer choice. Remember, if you want students to be able to see question feedback, you must enable it in the Quiz Submission View setup.

The image shows a quiz question editor interface. At the top, there is a dropdown menu set to "True or False". Below it, there is a "Short Description" field, a "Question Text" field, and an "Answers" section with two radio buttons: "True" and "False". Each radio button has an "Add feedback for this answer" field next to it. At the bottom, there is an "Overall Feedback" field. A red box highlights the "Options" menu, which contains the following items: "Remove Feedback" (checked), "Add Hint", "Remove Short Description" (checked), and "Add Enumeration". Red circles highlight the "Short Description" field, the "Add feedback for this answer" fields for both "True" and "False" answers, and the "Overall Feedback" field. Red arrows point from the "Short Description" and "Question Text" fields to the "Remove Short Description" option in the menu.

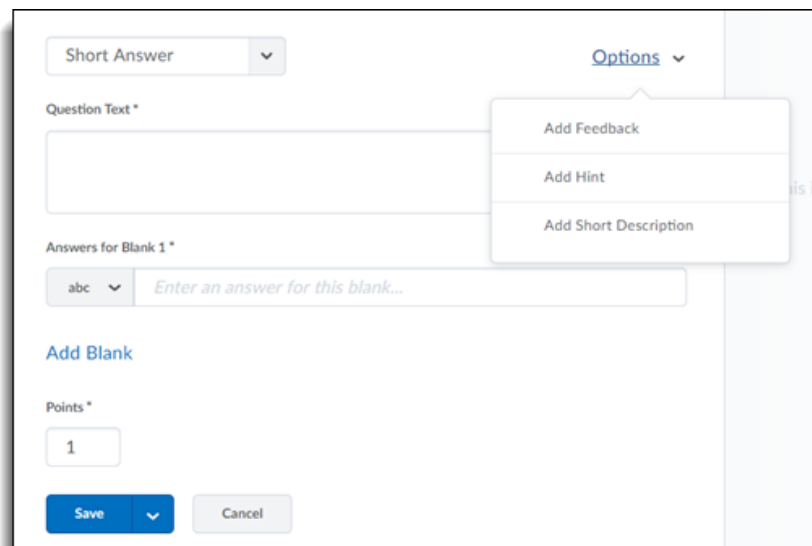
Multiple Choice

1. Select your **enumeration preference**. That is, what (if anything) do you want to appear before the answer choices (a, b, c or I, ii, iii, etc.).
2. Set the Style for the choices – vertical, horizontal, or drop-down.
3. Also determine if you want to randomize options. This setting will only randomize the answer options, not the quiz questions.
4. Enter your answer options in the **“Value” fields**. You can also enter feedback for each option, but remember if you want users to be able to view the feedback, you must enable it in Submission View during quiz setup.
5. Assign the correct answer a **weight of 100%**. If all other answers are incorrect, leave their weight at 0%.
6. The standard option set is four, but you can add additional options by enter the number of desired additional options and clicking **“Add Option.”**



Short Answer

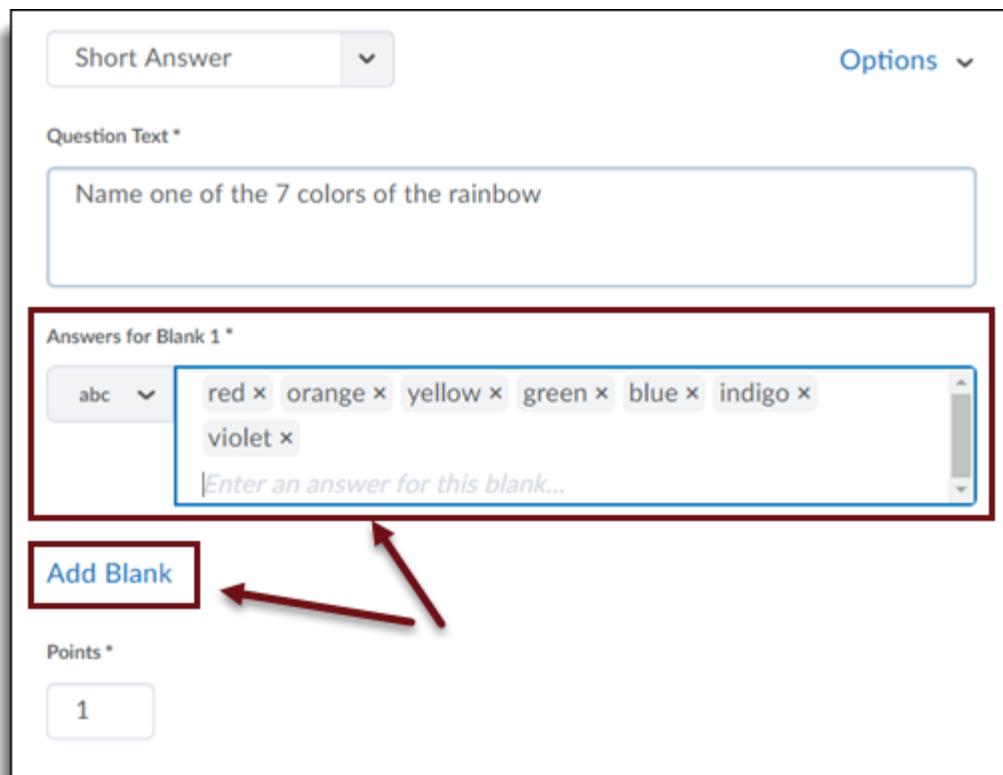
1. Determine the response field size by adjusting the **"Rows"** and **"Columns."**
2. Enter the desired answer in the **"Answer"** field



- By using the drop-down arrow beside the answer, you can select how you would like the students' responses to be graded



- You can add additional accepted answers by typing the answer in “enter and answer for this blank” and pressing enter on your keyboard.
- You can also add additional blanks by click “Add Blank.”



Written Response

1. Select the number of **“Rows”** and **“Columns”** to control the input field’s display size for users.
2. If desired, enter **“Initial Text”** to display to respondents above the answer text box.
3. Also determine if users will be able to utilize the HTML Editor editing tools when crafting their response.
4. If desired, fill in the **“Answer Key”** field for grading purposes. This will not be displayed to students, but can help instructors remember key points when evaluating responses.

New Question Library Interface

